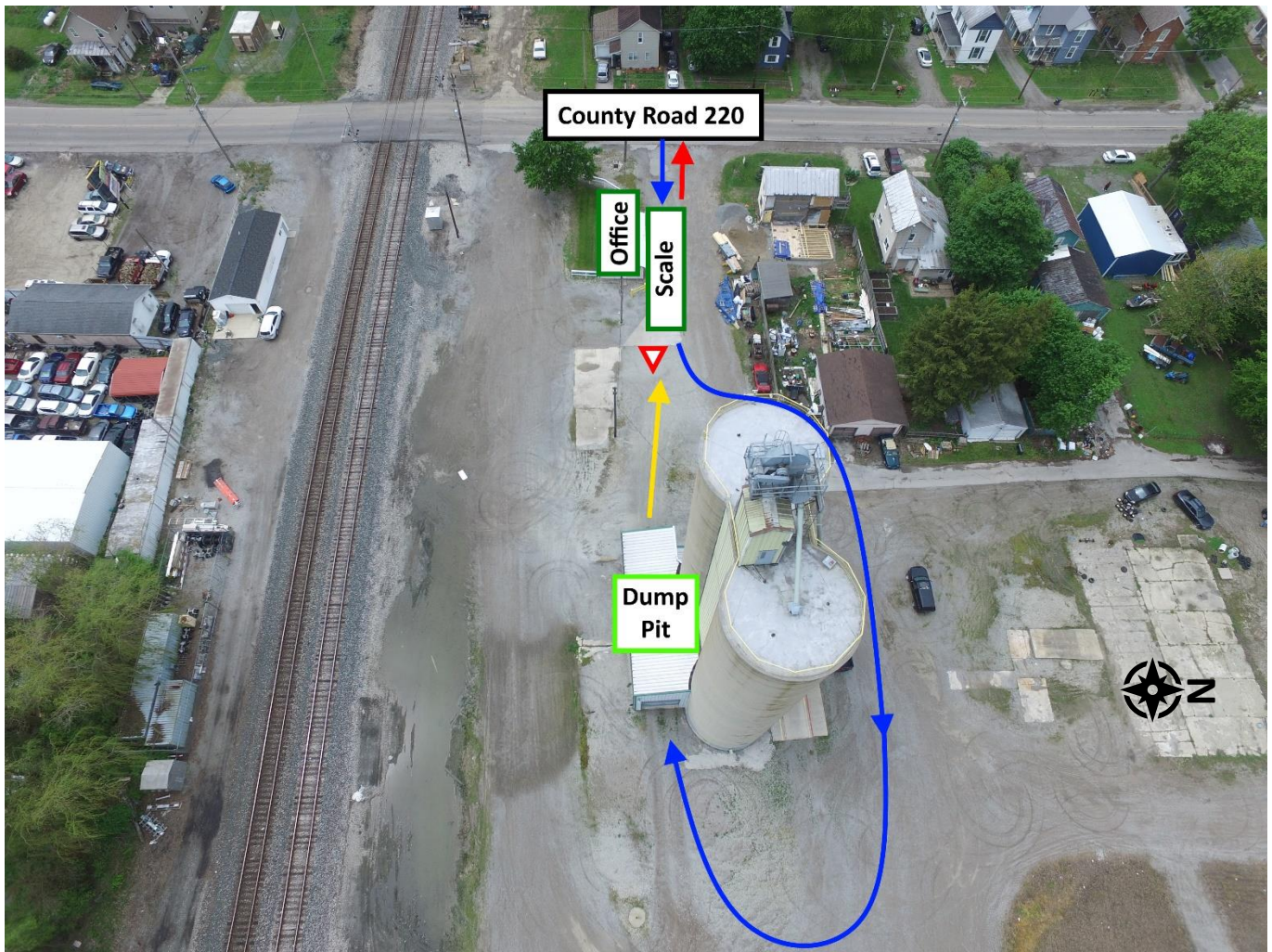


Welcome to


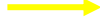



North Findlay Grain



Notes:

Please enter our facility from County Road 220 and proceed east towards the scales. Be sure your tarp is open, and yield to outbound trucks coming westbound from the dump pit. Once weighed and probed, you will be signaled, and following the signal you will proceed around the bin to the dump pit, westbound. Once empty, exit the pit and turn left to loop around the bins, proceeding to the scales, westbound. Yield to inbound trucks coming off the scales. Once weighed empty please exit the scales and retrieve your scale ticket from the office. Thank you for visiting, and for your support of Legacy Farmers Cooperative.

Legend:

-  Inbound
-  Outbound
-  Exit Facility
-  Stop
-  Yield